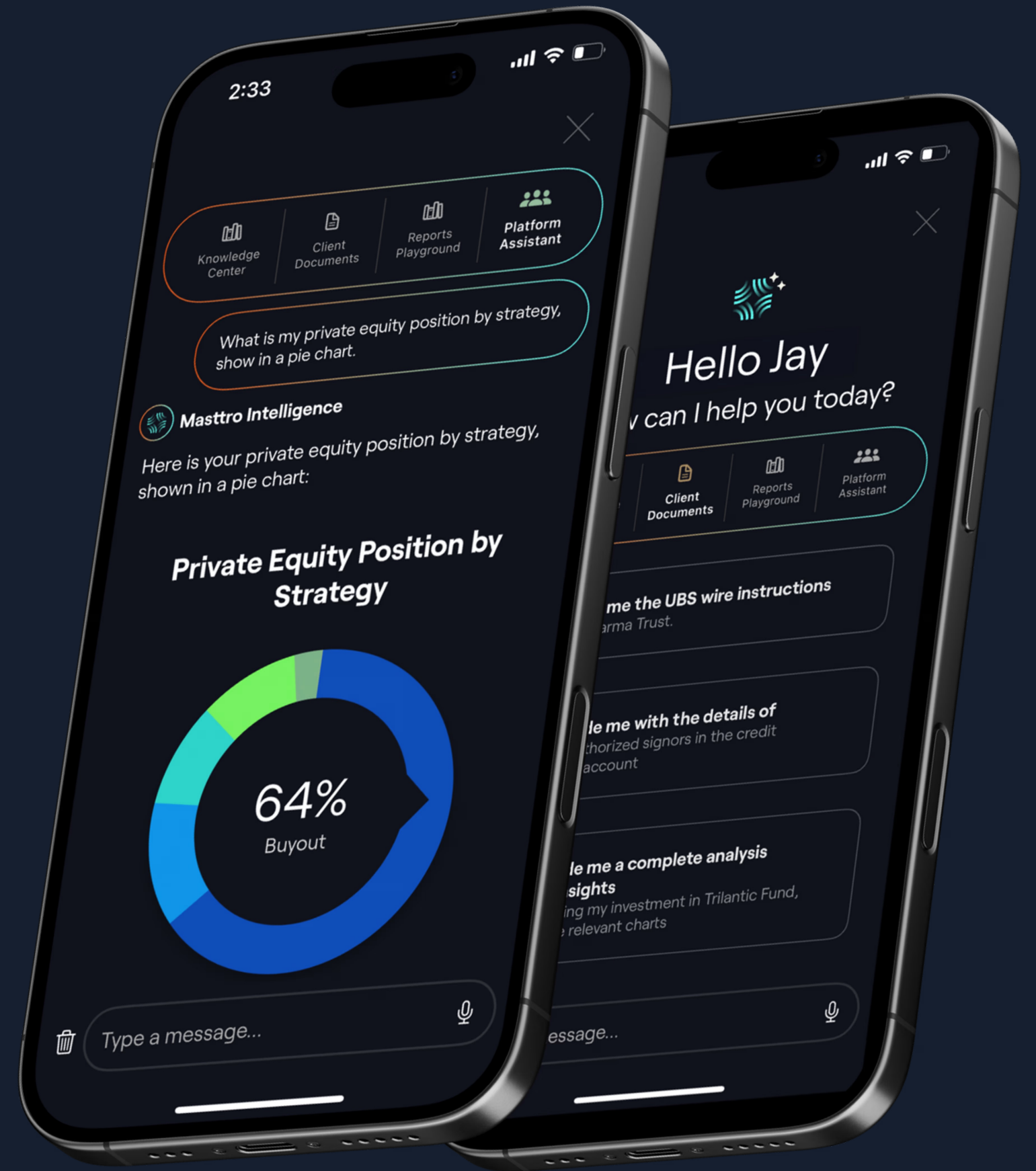




# A New Standard for Global Wealth Technology

## Capabilities Overview



# Transforming complexity into clarity

15+ years of wealthtech innovation with deep understanding of the complexities of UHNW wealth management

350+  
Clients  
Globally

10k+  
End  
Users

650+  
Direct  
Data Feeds

40  
Client  
Countries

7m+  
Daily  
Transactions

300k+  
Alternative  
Investments



# Mastro addresses the challenges of UHNW wealth management



Data Complexity



Buried Insights



Manual Processes



Privacy Concerns



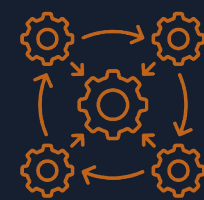
# A category leader in UHNW wealthtech

## Features to empower your business & clients



### Data Visualization & Reporting

Customizable, interactive reports across all assets in real time.



### Custodial Connections

650+ direct data feeds to custodians, banks & data providers worldwide.



### AI Features

Unparalleled AI features seamlessly embedded into the platform.



### Non-AUM Based Pricing

Transparent, fixed annual model not tied to assets under management.



### Cash Flow Management

Forecasts every inflow and outflow across the estate.



### Wealth Owner-Centricity

Total estate visibility, intuitive design & clear insights.



### Security & Data Privacy

Military grade cybersecurity & total client confidentiality.



### Leading UX

Intuitive UI with full, secure interactivity across web & mobile app.

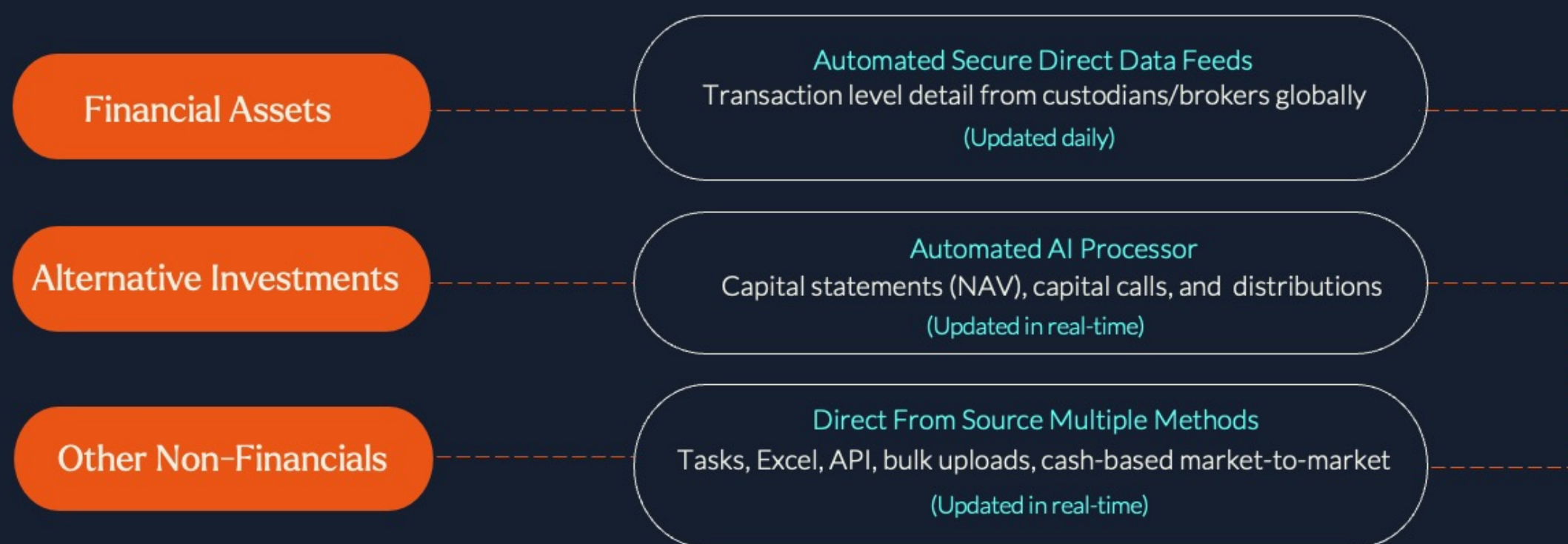


# We solve the challenge of data integration

Effortlessly centralize data - all assets, all regions, all currencies - through powerful automations & direct data feeds from 650+ global custodians

Data integration across providers was cited as the #1 challenge family offices face when working with external platforms.

*Simple, Family Office Software & Technology Report 2025*



# Mastro platform overview

An integrated solution, giving advisors features to empower stronger relationships



**Total Net Worth Overview**  
A holistic real-time view of the entire estate including both liquid and illiquid investments.

**Global Data Aggregation**  
Unparalleled level of detail into any asset class, no matter what the format or data type.

**Alternatives AI**  
Automatically ingest, tag & reconcile alts data, giving real-time visibility.

**Cash Flow Forecasting**  
Real-time ingestion of cash data for accurate cash flow recognition & reconciliation.

**Automated Reporting**  
Interactive reports generated in real-time, effectively eliminating legacy reporting chaos.

**Compliance**  
Enforce governance with entitlements & approval chains, audit trails & document lineage.

**Documents AI**  
Turn fragmented files into structured knowledge.

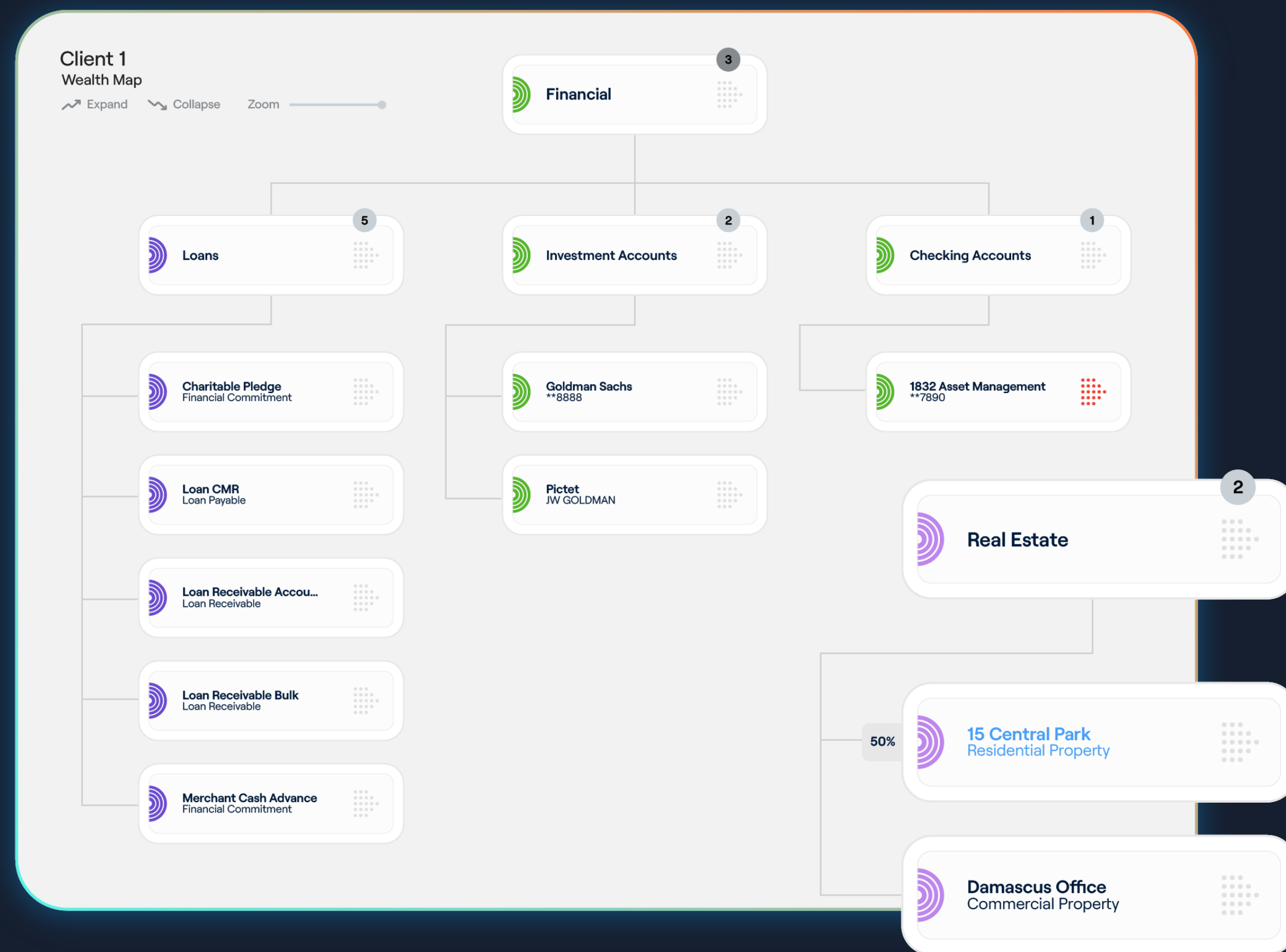
**Portfolio Management**  
Unified multi-custodian, multi-asset portfolios & real-time performance, allocation & exposure analytics across entities.



# Global Wealth Map

A proprietary interactive mapping tool delivering 100% of wealth, visually mapped

- Map & manage the entire family wealth structure
- Visualize total net worth instantly
- Accurately record & report asset ownership
- Outline wealth transfer/inheritance easily
- Establish a single source of truth for the family members & advisors
- Store data, documents & contacts securely



# Mastro Intelligence

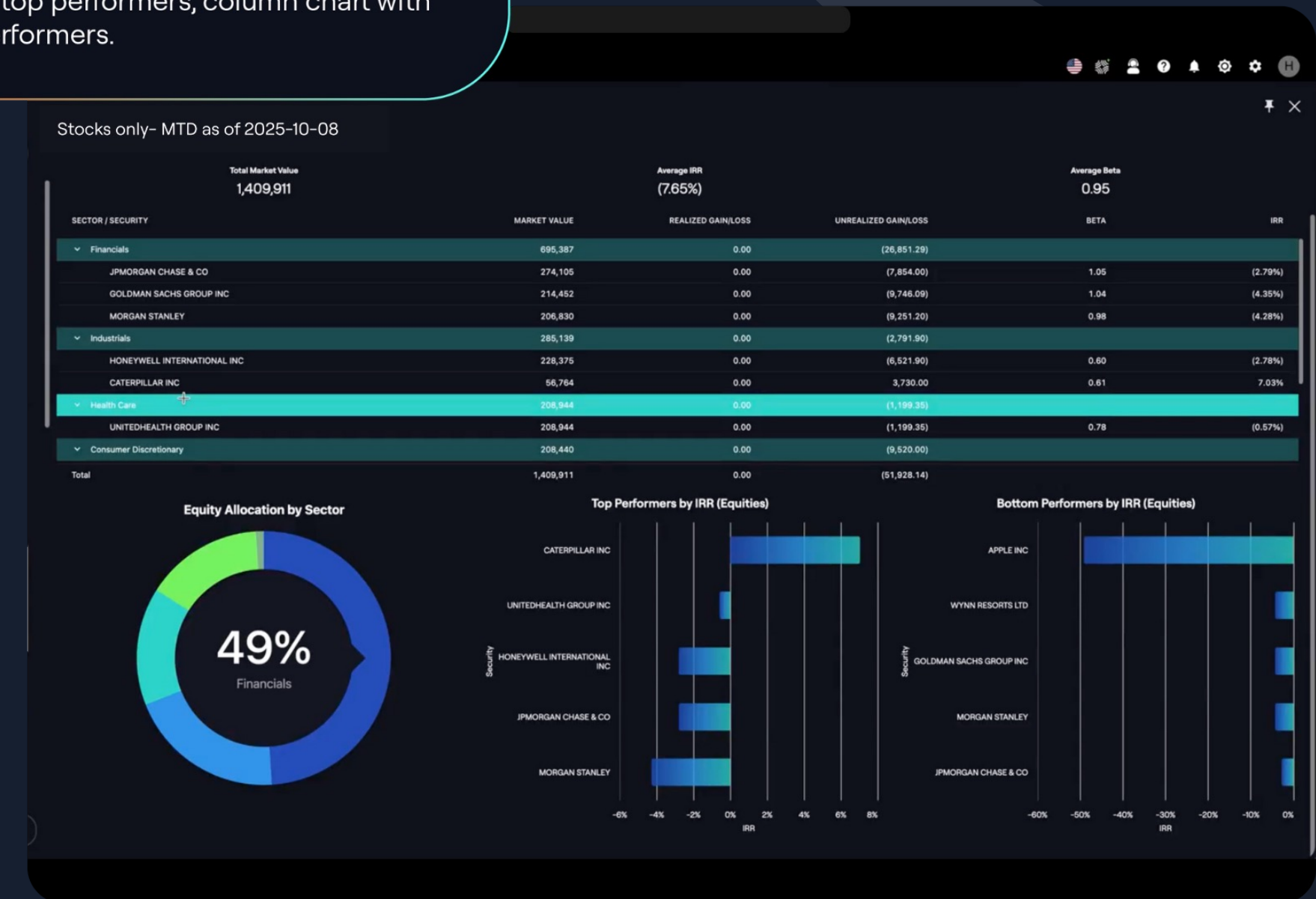
A secure AI layer embedded within Mastro.

Purpose built for UHNW to deliver faster answers, deeper insights & elevated client service

- Deliver insights & reduce learning curves via text & voice chat
- Manage documents effortlessly through automated ingestion & classification
- Automate the full alternatives lifecycle
- Act with security & confidentiality\*

\*No client data is used to train AI model & the system operates inside a locked-down private compute perimeter

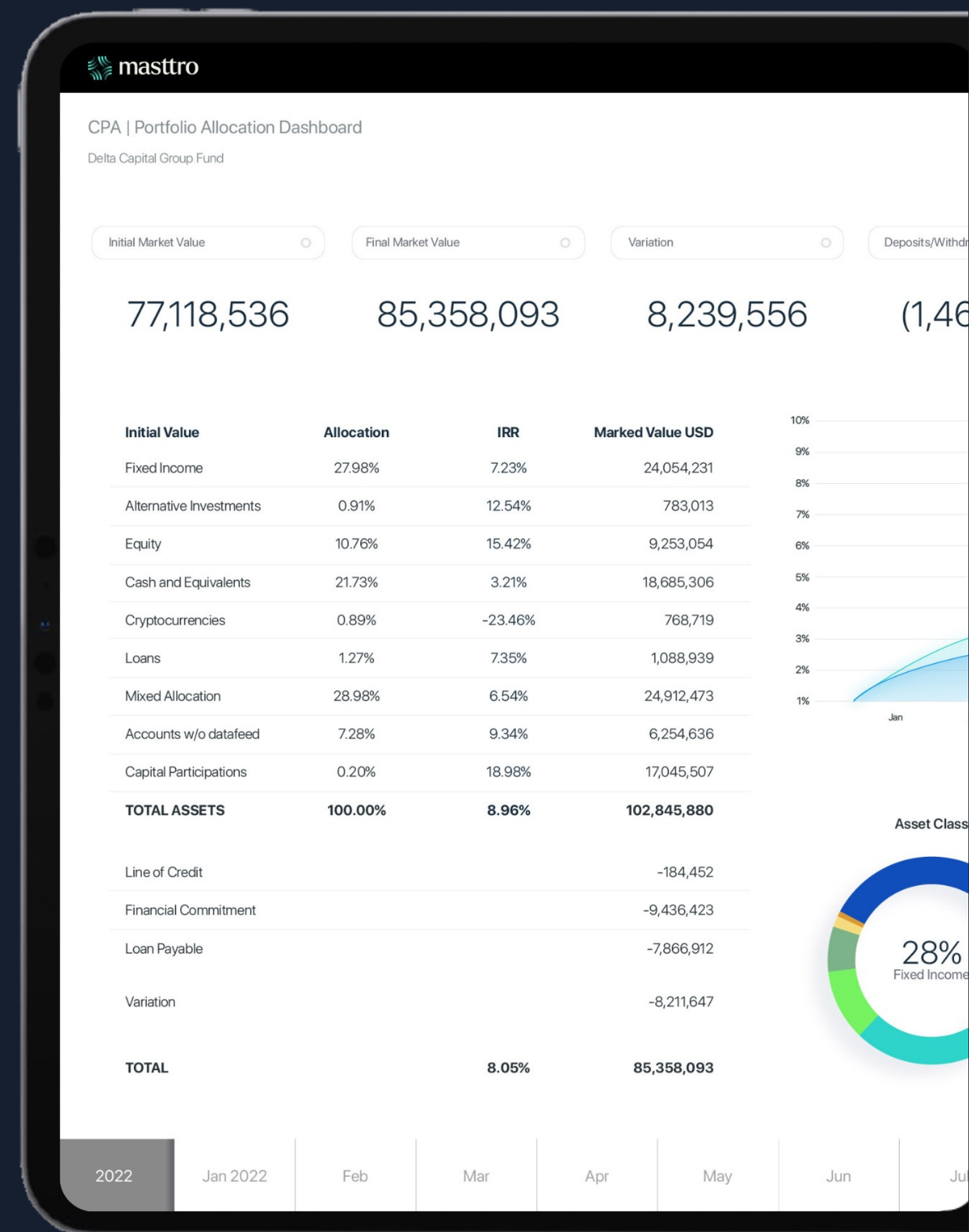
Create a dashboard that includes an equity table and consider only stock. The table should have the following columns: market value, realized gain/loss, unrealized gain/loss, sector, beta and IRR. A pie chart by sector, column chart with top performers, column chart with bottom performers.



# Consolidated Portfolio Analysis

A comprehensive view of consolidated wealth – total net worth, all assets, one interactive view

- Visualize client wealth structures
- Customize reporting for dynamic, tailored insights
- Share & export easily Easy
- Create personalized custom dashboards
- Access detailed holdings & transaction activity
- Analyze performance across time, asset class, geo & more

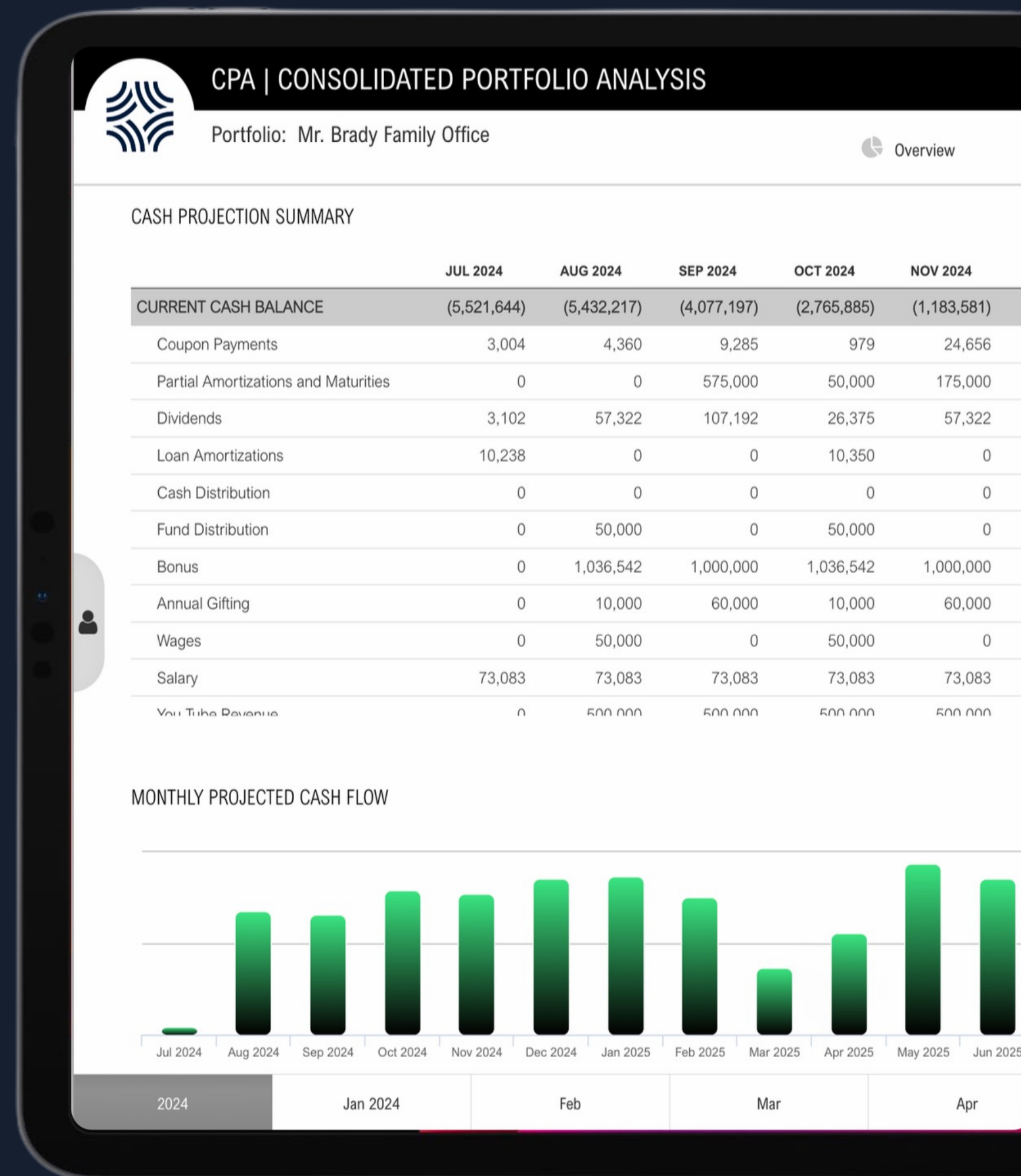


# CPA – Cash Flow Projections

## Future cash flows, clearly forecasted

- Model your future cash flows with precision
- Create customizable dashboards & precise reports
- Explore detailed cash flow forecasts via integrated cash projection
- Automatically project all security-related cash flows
- Track cash flow across diverse assets\*

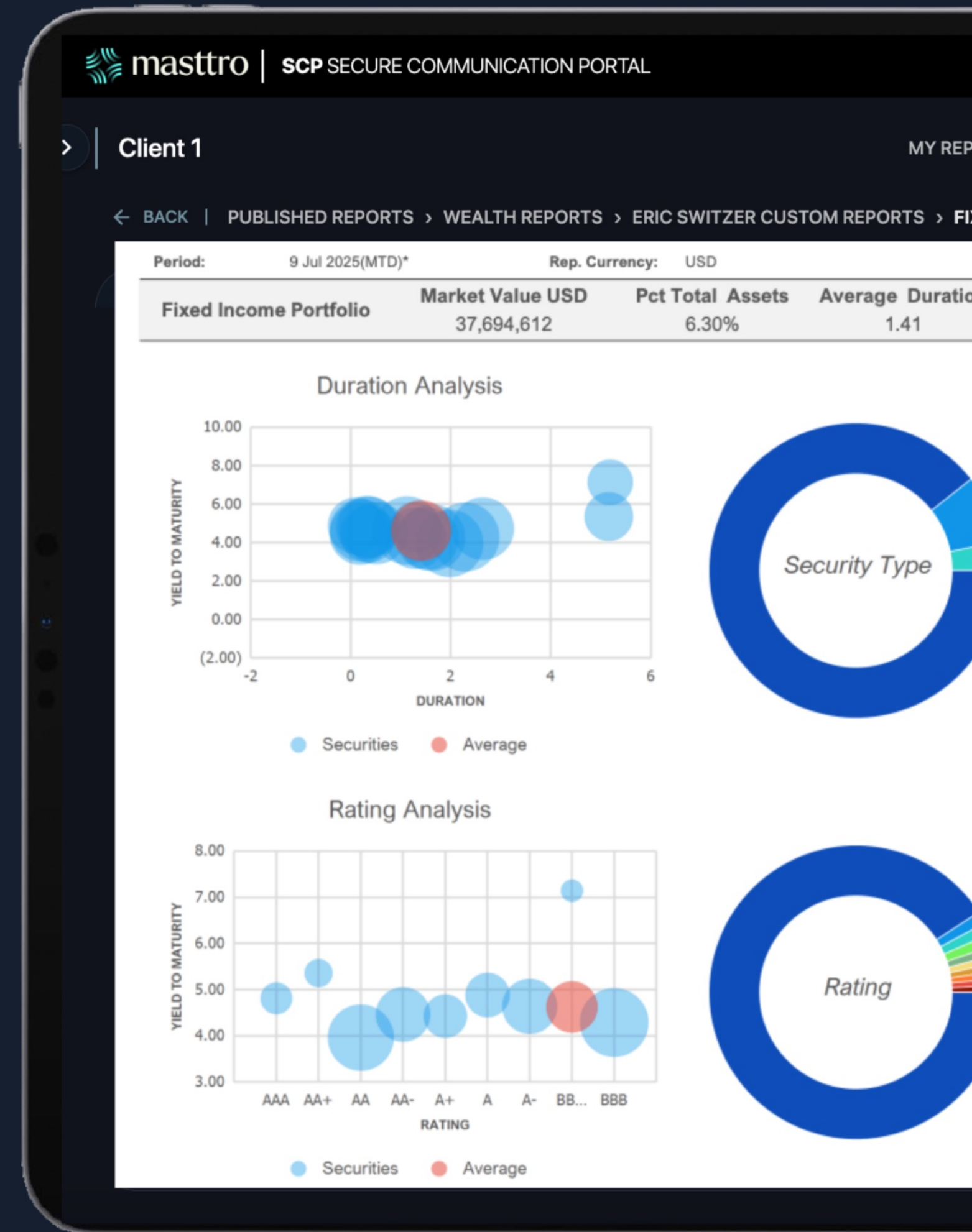
\*Including capital calls, distributions, family or charitable gifting, rental income, alimony, tuition, yacht maintenance, pet expenses, regular family expenses, bonuses, and tax obligations



# Secure Communication Portal (SCP)

An essential tool for secure communication, reporting & document exchange

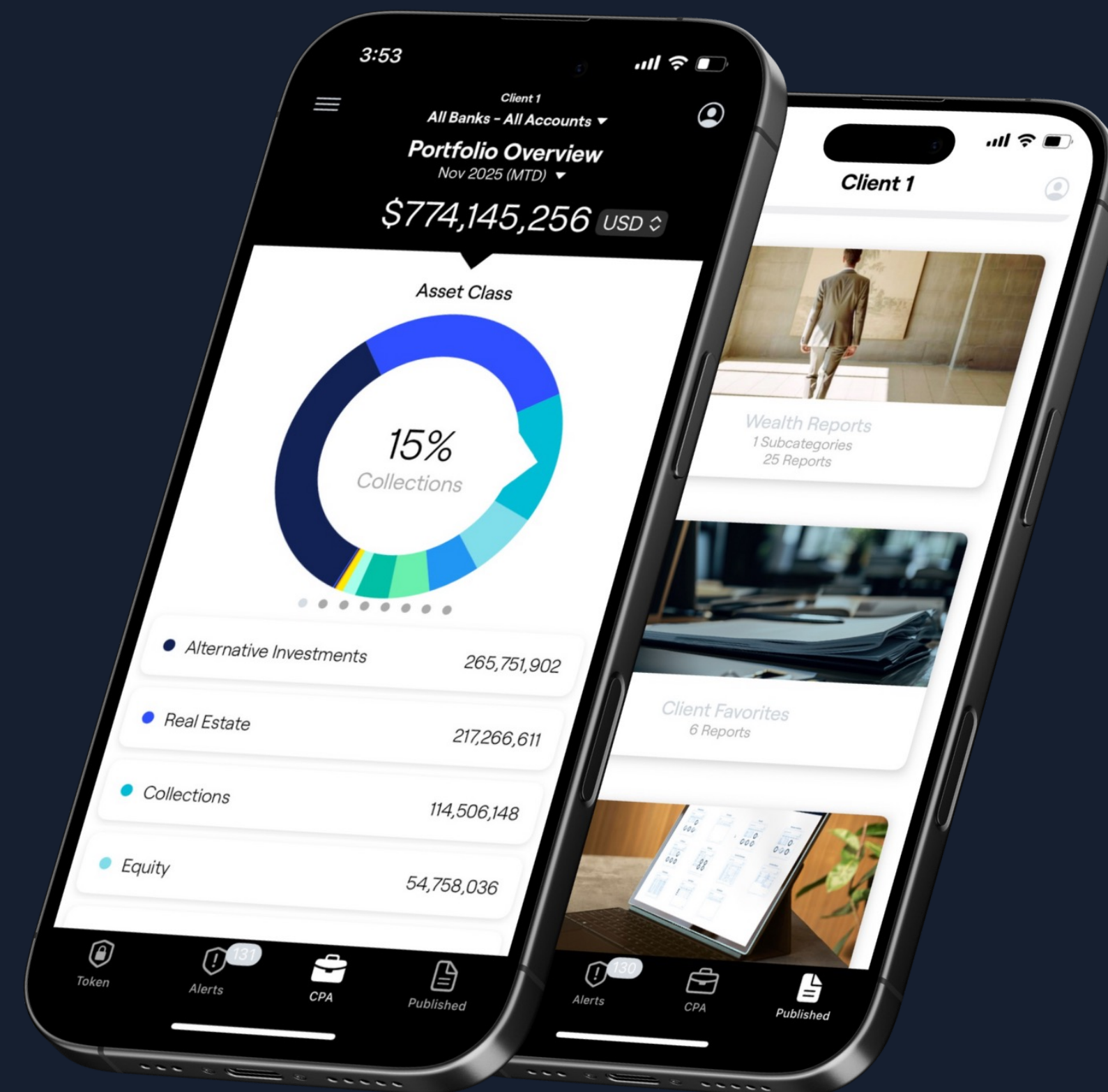
- Instantly generate over 150 pre-built reports
- Compile reports into impactful, cohesive presentations
- Integrate external documents (real estate, financials etc.) into Masttro reports
- Create custom reporting folders grouped by themes
- Automate report scheduling



# Mobile applications

## Wealth management, anytime, anywhere via iPhone, iPad & Android devices

- Access interactive net worth, asset allocation, holdings & performance across devices across devices, seamlessly
- Stay informed with platform generated alerts
- Streamline management by uploading assets to global wealth map & importing contacts via mobile
- View & manage reports, enhancing communication between advisors and wealth owners



# A white labeled environment

Easily customize the digital experience to suit your clients & match your brand

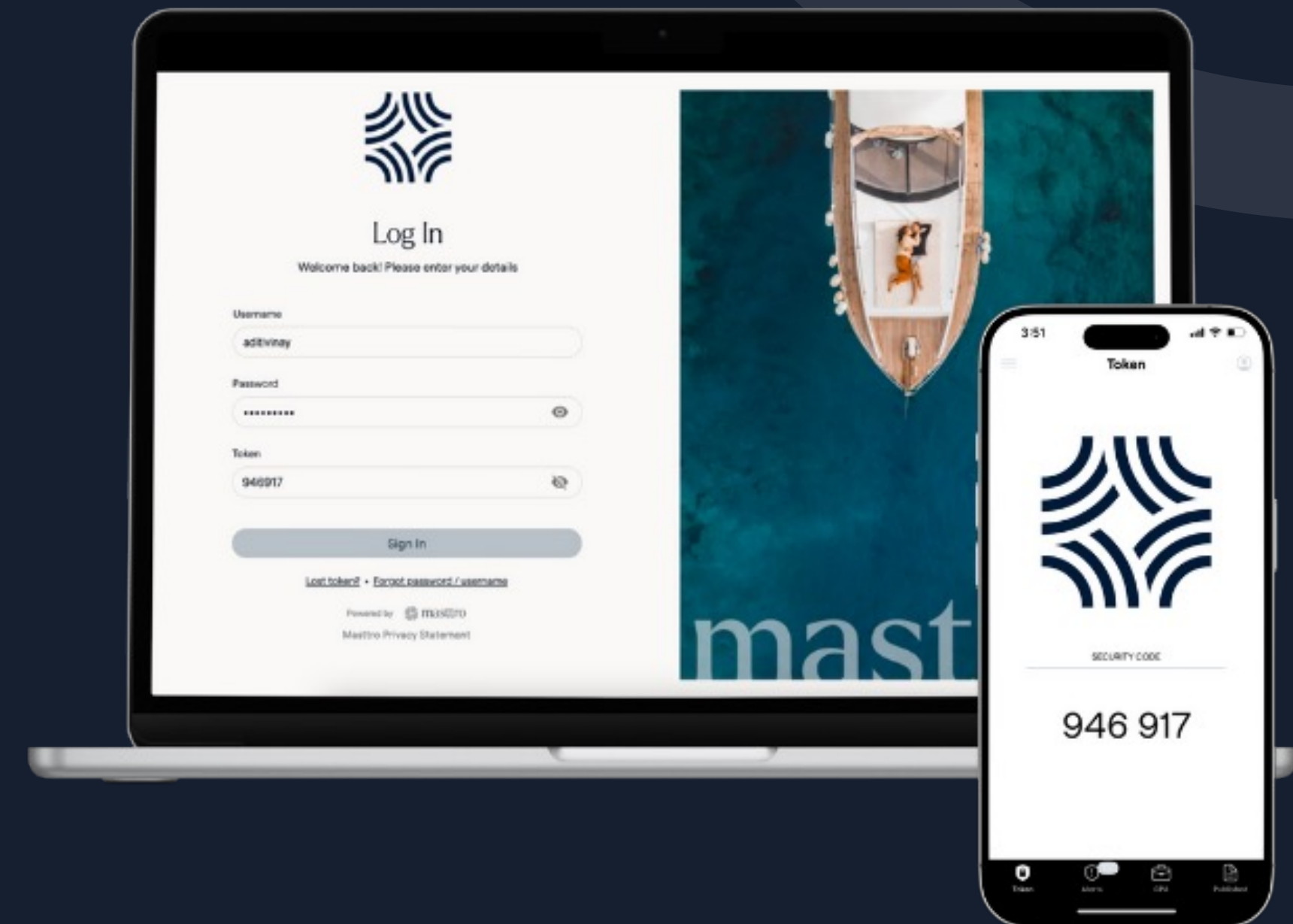
- Differentiate the platform without building your own technology
- Build client loyalty & adoption via a best-in-class user experience
- Customize at scale across multiple clients



# Industry leading security

Our cybersecurity infrastructure ensures safety & confidentiality of all client information, without compromise

- Multi-factor authentication
- Military-grade encryption protocols
- Data encrypted at rest and in transit
- Storage in dedicated Tier 4 data center in Switzerland
- Client owns encryption key to their data
- Private cloud architecture with dedicated servers
- No data stored on any device
- Secure communication portal in place of unsecure emails
- Digital document vaults
- ISAE 3402 Type II Certification
- Compliant with ISO-27001 security standards





Visit [Mastro.com](https://Mastro.com) to explore our full product capabilities & request a demo.

